



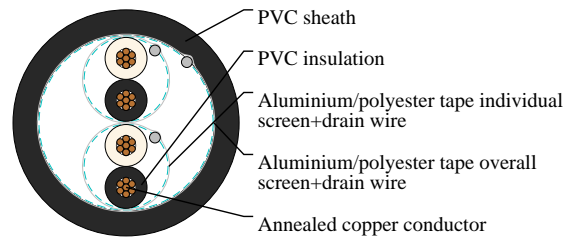
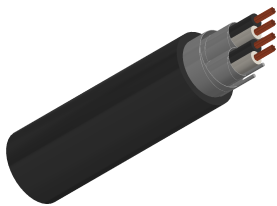
Caledonian

JIS Code Power & Control Cables

www.caledonian-cables.com

marketing@caledonian-cables.com

CVV-I/C AMS 2P1.5



APPLICATIONS

Used for electric signal transmission of control or monitoring circuits for 0.6/1kV.

CABLE CONSTRUCTION

Conductor: Stranded annealed copper wires

Insulation: Polyvinyl chloride (PVC)

Pairing: Two insulated conductors uniformly twisted together

Individual Screen: Aluminium/polyester tape is applied over each pair metallic side down in contact with tinned copper drain wire.

Filler: Non-hygroscopic material(optional)

Binding tape: Polyester (Mylar) tape (optional)

Overall Screen: Aluminium/polyester tape is applied over each pair metallic side down in contact with tinned copper drain wire.

Sheath: Polyvinyl chloride (PVC), Black color (other colors can be provided upon request)

COLOUR CODE

Black and white with marking numbers

PHYSICAL AND THERMAL PROPERTIES

Maximum conductor temperature 70°C

Circuit voltage not exceeding 600 volts

Test voltage: 3500 volts

DIMENSION AND PARAMETERS

No. of Pairs	Nominal Cross-sectional Area	No. and Dia. of Wires	Conductor Diameter	Nominal Insulation Thickness	Nominal Sheath Thickness	Approx. Overall Diameter	Approx. Weight	Max. DC Resistance at 20°C
	mm ²	no./mm	mm	mm	mm	mm	kg/km	Ω/km
2	1.5	7/0.53	1.59	0.8	1.8	16	280	12.34